

CHILLED WATER FAN COIL UNITS

WALL MOUNT - TYPE



IZW Series

Wall Mounted Type

we Izumi have a very long experience in developing the direct expansion wall mounted fan coil units of various looks and designs. New models of such types of units make their debut regularly. We have always kept an eye on the world trend for the demand of this kind of products and are always prepared to answer to the market needs. By far the split system wall mounted units are the most popular worldwide, capturing a majority of about 60 percent of the total mini split market.

In recent years the demand for the hydronic wall mounted fan coil unit is on the increase in Europe and other regions because of the competitive price, ready availability and the beauty of the wall mounted unit itself as well as the need to void or reduce the presence of the CFC refrigerant in the room.

We have always put emphasis on our continuous development of new products, particularly the wall mounted units, as well as their high, reliable quality and performance. We extend our range of the wall mounted unit to include the hydronic versions in line with the world trend. So customers can be assured of the top quality of our products on offer as usual.

Technical specification for standard conditions

Model			IZW13MPVC/H-CW	IZW13MPVC/H-CW	IZW18MPVC/H-CW	IZW24MPVC/H-CW
Chilled Water Cooling (A)	Total capacity	(Watts)	2750	3760	5870	6340
	Sensible capacity	(Watts)	2250	2980	4430	4930
	Water flow rate	(l/hr)	472	646	1007	1088
	Pressure drop	(kPa)	21.0	23.0	57.0	63.0
Hot Water Heating (B)	Capacity	(Watts)	4030	4680	7820	8530
Hot Water Heating (C)	Capacity	(Watts)	6820	6940	12300	13830
	Water flow rate	(l/hr)	600	610	1081	1215
	Pressure drop	(kPa)	23.4	20.0	58.7	66.3
Inlet and outlet	Type	Male Water Pipe Thread				
Pipe connection	Diameter Nominal	(Inch)	½	½	½	½
Drain connection	Diameter	(mm)	16 OD	16 OD	16 OD	16 OD
Evaporator Coil	Face area	(m ²)	0.1638	0.2314	0.2318	0.3275
	Row		2	2	2	2
	Fin Type/ Fin pitch		Louver/ 1.21	Louver/ 1.21	Louver/ 1.21	Louver/ 1.21
	Tube diameter	(mm)	ø 7 Smooth	ø 7 Smooth	ø 7 Smooth	ø 7 Smooth
Fan	Type	Cross flow fan				
	Size Dia. X Length	(mm.)	106 x 642	106 x 642	106 x 920	106 x 920
	No.		1	1	1	1
Fan Motor	Type	Permanent Split Capacitor				
	Power supply	(V/Ph/Hz)	220-240/1/50			
	Power Input	(W)	47.0	47.0	51.0	59.0
	Running Current	(A)	0.24	0.24	0.23	0.26
	RPM	T/H/M/L	1340/1200/1080/1000	1260/990/800/720	1380/1280/1170/1020	1320/1130/980/810
Nominal Air Flow Rate	M ³ /H	T/H/M/L	700/540/430/390	710/500/420/370	1125/980/840/690	1140/890/760/600
Sound pressure level	dB (A)	T/H/M/L	49/45/42/40	46/36/31/28	48/46/43/39	49/43/38/33
Dimension	H x W x D	(mm.)	315 x 824 x 245	315 x 824 x 245	315 x 1147 x 245	315 x 1147 x 245
Net weight		(Kg)	11	12	14	15

Note:

- A** – Cooling capacity is based on : Inlet water temp. 7°C ; Outlet water temp. 12°C ; Inlet air temp. 27°C DB, 19°C WB at turbo fan speed.
B – Heating capacity is based on : Inlet water temp. 50°C ; Same water flow as in cooling ; Inlet air temp. 20°C DB at turbo fan speed.
C – Heating capacity is based on : Inlet water temp. 70°C ; Outlet water temp. 60°C ; Inlet air temp. 20°C DB at turbo fan speed.

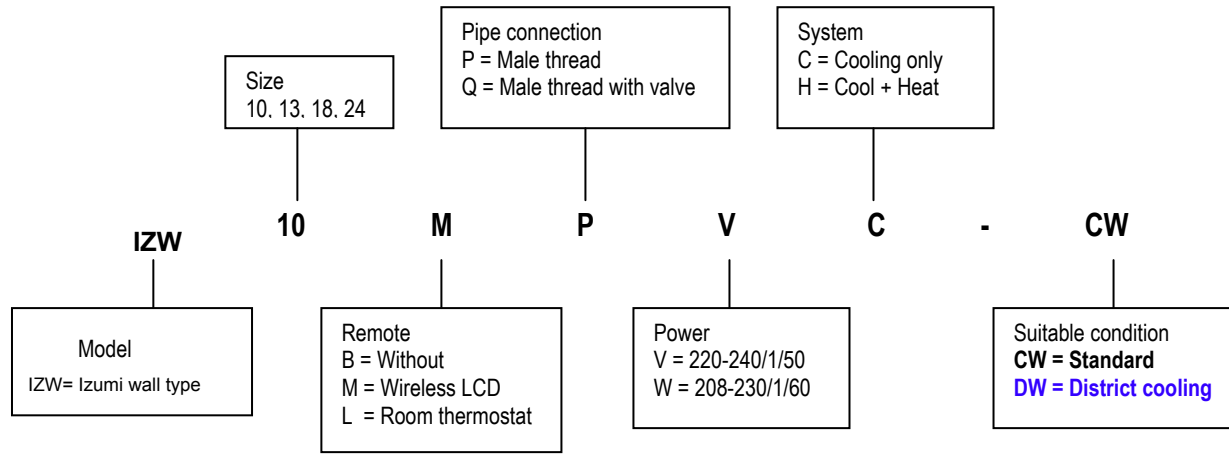
Technical specification for District cooling conditions

Model			IZW13MPVC/H-DW	IZW13MPVC/H-DW	IZW18MPVC/H-DW	IZW24MPVC/H-DW
Chilled water Cooling	Total capacity	(Watts)	2480	3090	4150	5320
	Sensible capacity	(Watts)	1920	2350	3270	4010
	Water flow rate	(l/hr)	237	295	396	508
	Pressure drop	(kPa)	36.0	22.5	33.0	36.6
Inlet and Outlet Pipe Connection	Type	Male Water Pipe Thread				
	Diameter Nominal	(Inch)	1/2	1/2	1/2	1/2
Drain Connection	Diameter	(mm)	16 OD.	16 OD.	16 OD.	16 OD.
Evaporator Coil	Face area	(m ²)	0.1638	0.2314	0.2318	0.3275
	Row		2	2	2	2
	Fin Type / Fin pitch		Louver /1.21	Louver /1.21	Louver /1.21	Louver /1.21
	Tube diameter	(mm)	ø 7 Smooth	ø 7 Smooth	ø 7 Smooth	ø 7 Smooth
Fan	Type	Cross Flow Fan				
	Size Dia x Length	(mm)	ø 106 x 642	ø 106 x 642	ø 106 x 920	ø 106 x 920
	No.		1	1	1	1
Fan Motor	Type	Permanent Split Capacitor				
	Power supply	(V/Ph/Hz)	220-240/1/50			
	Power Input	(W)	42	43	51	56
	Running Current	(A)	0.22	0.23	0.23	0.25
	RPM	T/H/M/L	1340/1210/1130/1060	1310/1130/990/880	1370/1260/1130/990	1330/1180/1040/830
Nominal Air Flow Rate	m ³ /hr	T/H/M/L	630 /500 /420 /380	660 /510 /430 /390	1020 /850 /720 /550	1050 /880 /730 /580
Sound pressure level	dB (A)	T/H/M/L	49 /45 /42 /40	46 /36 /31 /28	48 /46 /43 /39	49 /43 /38 /33
Dimension	HxWxD	(mm)	315 x 824 x 245	315 x 824 x 245	315 x 1147 x 245	315 x 1147 x 245
Net weight		(Kg)	11	12	14	15

Note :

Cooling capacity is based on : Inlet water temp.5.5 °C ; Outlet water temp. 14.5°C ; Inlet air temp. 24°C DB, 18°C WB at turbo fan speed.

PRODUCT INFORMATION



Performance Data - Standard Conditions

Cooling Capacity(kw)

5 degree Entering water Temperature

UNIT MODEL	WATER		ENTERING AIR TEMPERATURE °C																
	TEMP.	17° C WB				18° C WB			19° C WB			20° C WB			21° C WB			22° C WB	
	RISE	Total	SENSIBLE		Total	SENSIBLE		Total	SENSIBLE		Total	SENSIBLE		Total	SENSIBLE		Total	SENSIBLE	
	K.	Cap.	23 DB	24 DB	Cap.	24 DB	25 DB	Cap.	26 DB	27 DB	Cap.	27 DB	28 DB	Cap.	28 DB	29 DB	Cap.	29 DB	30 DB
IZW10MPVC-CW	4	2.60	1.95	2.11	3.03	2.08	2.24	3.52	2.39	2.55	3.96	2.51	2.67	4.39	2.61	2.77	4.90	2.74	2.90
	5	2.29	1.82	1.98	2.75	1.97	2.13	3.20	2.26	2.42	3.66	2.39	2.55	4.14	2.52	2.68	4.62	2.63	2.79
	6	2.00	1.71	1.87	2.45	1.85	2.01	2.89	2.14	2.30	3.38	2.28	2.44	3.86	2.41	2.57	4.38	2.54	2.70
	7	1.64	1.57	1.64	2.12	1.72	1.88	2.60	2.03	2.19	3.11	2.18	2.34	3.55	2.29	2.45	4.11	2.44	2.60
	8	1.32	1.32	1.32	1.78	1.59	1.75	2.29	1.91	2.07	2.79	2.06	2.22	3.26	2.19	2.35	3.85	2.35	2.51
IZW13MPVC-CW	4	3.52	2.59	2.79	4.10	2.79	2.99	4.68	3.17	3.37	5.17	3.30	3.50	5.73	3.44	3.64	6.42	3.63	3.83
	5	3.19	2.45	2.65	3.79	2.65	2.85	4.38	3.04	3.24	4.88	3.17	3.37	5.49	3.34	3.54	6.18	3.53	3.73
	6	2.87	2.31	2.51	3.48	2.52	2.72	4.07	2.91	3.11	4.61	3.06	3.26	5.24	3.24	3.44	5.88	3.41	3.61
	7	2.58	2.19	2.39	3.18	2.39	2.59	3.74	2.77	2.97	4.31	2.94	3.14	4.96	3.12	3.32	5.58	3.29	3.49
	8	2.27	2.06	2.26	3.90	2.28	2.48	3.43	2.64	2.84	4.05	2.83	3.03	4.67	3.01	3.21	5.31	2.81	3.01
IZW18MPVC-CW	4	5.91	4.06	4.35	6.19	4.09	4.37	7.01	4.62	4.90	7.82	4.84	5.13	8.73	5.08	5.37	9.65	5.31	5.60
	5	5.07	3.70	3.98	5.87	3.95	4.24	6.68	4.47	4.76	7.48	4.69	4.99	8.31	4.91	5.19	9.30	5.17	5.45
	6	4.63	3.51	3.80	5.49	3.79	4.07	6.30	4.32	4.61	7.14	4.55	4.85	8.00	4.78	5.07	8.92	5.01	5.30
	7	4.10	3.29	3.58	5.05	3.60	3.89	5.92	4.16	4.45	6.78	4.41	4.70	7.70	4.66	4.95	8.58	4.88	5.17
	8	3.56	3.07	3.35	4.57	3.41	3.69	5.44	3.97	4.26	6.43	4.27	4.56	7.32	4.51	4.80	8.30	4.77	5.06
IZW24MPVC-CW	4	2.93	2.82	2.93	3.98	3.17	3.46	5.00	3.79	4.08	5.94	4.08	4.36	6.92	4.35	4.64	7.94	4.63	4.92
	5	4.84	4.26	4.59	6.76	4.56	4.89	7.59	5.13	5.46	8.48	5.38	5.71	9.43	5.64	5.97	10.46	5.91	6.23
	6	5.44	4.09	4.42	6.35	4.38	4.71	7.19	4.96	5.29	8.08	5.21	5.54	9.07	5.48	5.81	10.01	5.72	6.05
	7	4.98	3.89	4.22	5.89	4.19	4.52	6.86	4.82	5.15	7.77	5.09	5.41	8.70	5.33	5.66	9.65	5.57	5.90
	8	4.45	3.67	4.00	5.35	3.96	4.29	6.41	4.63	4.96	7.38	4.92	5.25	8.31	5.17	5.50	9.30	5.43	5.76
IZW24MPVC-CW	4	3.95	3.46	3.79	4.88	3.77	4.09	5.96	4.45	4.78	6.93	4.74	5.07	7.91	5.01	5.34	8.96	5.30	5.63
	5	3.26	3.19	3.26	4.24	3.52	3.84	5.34	4.20	4.53	6.37	4.52	4.85	7.44	4.83	5.16	8.57	5.14	5.47

6 degree Entering water Temperature

UNIT MODEL	WATER		ENTERING AIR TEMPERATURE °C																
	TEMP.	17° C WB				18° C WB			19° C WB			20° C WB			21° C WB			22° C WB	
	RISE	Total	SENSIBLE		Total	SENSIBLE		Total	SENSIBLE		Total	SENSIBLE		Total	SENSIBLE		Total	SENSIBLE	
	K.	Cap.	23 DB	24 DB	Cap.	24 DB	25 DB	Cap.	26 DB	27 DB	Cap.	27 DB	28 DB	Cap.	28 DB	29 DB	Cap.	29 DB	30 DB
IZW10MPVC-CW	4	2.41	1.87	2.03	2.84	2.01	2.17	3.28	2.30	2.46	3.73	2.42	2.58	4.20	2.54	2.70	4.65	2.64	2.80
	5	2.10	1.75	1.91	2.55	1.89	2.05	2.99	2.18	2.34	3.44	2.30	2.46	3.91	2.43	2.59	4.39	2.55	2.71
	6	1.78	1.62	1.78	2.22	1.76	1.92	2.68	2.06	2.22	3.16	2.20	2.36	3.60	2.31	2.47	4.15	2.46	2.62
	7	1.42	1.42	1.42	1.90	1.64	1.80	2.38	1.95	2.11	2.85	2.09	2.25	3.32	2.21	2.37	3.89	2.36	2.52
	8	1.09	1.09	1.09	1.54	1.50	1.54	2.07	1.83	1.99	2.57	1.98	2.14	3.06	2.12	2.28	3.61	2.26	2.42
IZW13MPVC-CW	4	3.30	2.50	2.70	3.80	2.65	2.85	4.36	3.03	3.32	4.92	3.19	3.39	5.51	3.35	3.55	6.16	3.52	3.72
	5	2.93	2.34	2.54	3.48	2.52	2.72	4.05	2.90	3.10	4.63	3.07	3.27	5.26	3.24	3.44	5.88	3.41	3.61
	6	2.57	2.19	2.39	3.18	2.39	2.59	3.76	2.77	2.97	4.33	2.94	3.15	4.94	3.12	3.32	5.56	3.28	3.48
	7	2.31	2.08	2.28	2.88	2.27	2.47	3.49	2.67	2.87	4.04	2.83	3.03	4.66	3.00	3.20	5.24	3.15	3.35
	8	2.11	2.11	2.11	2.63	2.17	2.37	3.24	2.57	2.77	3.82	2.74	2.94	4.40	2.90	3.10	4.98	3.05	3.25
IZW18MPVC-CW	4	5.01	3.67	3.96	5.80	3.92	4.21	6.62	4.45	4.74	7.42	4.67	4.96	8.24	4.88	5.17	9.22	5.13	5.42
	5	4.65	3.52	3.80	5.44	3.77	4.05	6.24	4.29	4.58	7.08	4.53	4.82	7.94	4.75	5.04	8.94	5.02	5.31
	6	4.18	3.32	3.61	5.06	3.60	3.89	5.87	4.14	4.43	6.70	4.38	4.67	7.56	4.61	4.90	8.57	4.88	5.17
	7	3.68	3.15	3.44	4.64	3.43	3.72	5.23	4.00	4.29	6.37	4.24	4.53	7.23	4.48	4.77	8.18	4.72	5.01
	8	3.10	2.88	3.10	4.10	3.22	3.51	5.12	3.84	4.13	5.97	4.09	4.38	6.92	4.35	4.64	7.85	4.60	4.89
IZW24MPVC-CW	4	2.56	2.56	2.56	3.51	2.99	3.28	4.56	3.62	3.91	5.47	3.90	4.18	6.56	4.22	4.51	7.51	4.47	4.76
	5	5.44	4.09	4.42	6.34	4.38	4.71	7.16	4.95	5.28	8.07	5.21	5.54	8.97	5.44	5.77	10.05	5.73	6.06
	6	4.99	3.90	4.23	5.93	4.21	4.54	6.81	4.80	5.13	7.70	5.05	5.38	8.65	5.31	5.64	9.66	5.57	5.90
	7	4.55	3.71	4.04	5.50	4.02	4.35	6.43	4.64	4.97	7.32	4.90	5.22	8.30	5.17	5.50	9.25	5.41	5.74
	8	4.04	3.50	3.82	4.98	3.81	4.14	6.00	4.46	4.79	6.92	4.74	5.06	7.84	4.99	5.32	8.76	5.22	5.55
IZW24MPVC-CW	4	3.56	3.30	3.63	4.44	3.59	3.92	5.40	4.23	4.56	6.43	4.54	4.87	7.43	4.82	5.15	8.38	5.07	5.40
	5	3.02	3.02	3.02	3.85	3.36	3.69	4.74	3.97	4.30	5.48	4.17	4.50	7.00	4.64	4.97	8.00	4.92	5.25

7°C ENTERING TEMPERATURE

UNIT MODEL	WATER		ENTERING AIR TEMPERATURE °C																
	TEMP.	17° C WB			18° C WB			19° C WB			20° C WB			21° C WB			22° C WB		
	RISE	Total	SENSIBLE		Total	SENSIBLE		Total	SENSIBLE		Total	SENSIBLE		Total	SENSIBLE		Total	SENSIBLE	
	K.	Cap.	23 DB	24 DB	Cap.	24 DB	25 DB	Cap.	26 DB	27 DB	Cap.	27 DB	28 DB	Cap.	28 DB	29 DB	Cap.	29 DB	30 DB
IZW10MPV-CW	4	2.17	1.78	1.94	2.60	1.91	2.07	3.03	2.20	2.36	3.48	2.32	2.48	3.91	2.43	2.59	4.45	2.57	2.73
	5	1.84	1.64	1.80	2.29	1.79	1.95	2.75	2.09	2.25	3.21	2.22	2.38	3.64	2.33	2.49	4.16	2.46	2.62
	6	1.52	1.52	1.52	2.00	1.68	1.84	2.45	1.97	2.13	2.95	2.12	2.28	3.41	2.24	2.40	3.85	2.35	2.51
	7	1.21	1.21	1.21	1.64	1.54	1.64	2.12	1.85	2.01	2.65	2.01	2.17	3.11	2.14	2.30	3.56	2.25	2.41
	8	0.91	0.91	0.91	1.32	1.32	1.32	1.78	1.73	1.78	2.30	1.88	2.04	2.83	2.03	2.19	3.30	2.15	2.31
IZW13MPV-CW	4	3.01	2.37	2.57	3.55	2.55	2.75	4.06	2.90	3.10	4.63	3.07	3.27	5.21	3.22	3.42	5.80	3.38	3.58
	5	2.68	2.23	2.43	3.25	2.42	2.62	3.76	2.78	2.98	4.37	2.96	3.16	4.94	3.12	3.32	5.56	3.28	3.48
	6	2.37	2.10	2.31	2.92	2.29	2.49	3.46	2.65	2.85	4.05	2.83	3.03	4.62	2.99	3.19	5.24	3.15	3.35
	7	2.07	1.99	2.07	2.65	2.18	2.38	3.20	2.55	2.75	3.78	2.73	2.93	4.36	2.89	3.09	4.93	3.04	3.24
	8	1.84	1.84	1.84	2.33	2.05	2.25	2.90	2.43	2.63	3.50	2.62	2.82	4.08	2.78	2.98	4.68	2.94	3.14
IZW18MPV-CW	4	4.61	3.50	3.79	5.90	3.96	4.25	6.19	4.27	4.56	7.03	4.51	4.80	7.85	4.72	5.01	8.73	4.94	5.23
	5	4.20	3.33	3.62	5.07	3.61	3.90	5.87	4.14	4.43	6.72	4.38	4.67	7.54	4.60	4.89	8.45	4.83	5.12
	6	3.71	3.12	3.41	4.62	3.43	3.72	5.48	3.98	4.27	6.34	4.24	4.53	7.19	4.46	4.75	8.09	4.69	4.98
	7	3.15	2.90	3.15	4.10	3.22	3.51	5.05	3.81	4.10	5.95	4.08	4.37	6.80	4.31	4.60	7.69	4.54	4.83
	8	2.59	2.59	2.59	3.56	3.01	3.30	4.56	3.62	3.91	5.53	3.92	4.21	6.48	4.19	4.47	7.41	4.43	4.72
IZW24MPV-CW	4	5.01	3.90	4.23	5.83	4.16	4.49	6.76	4.78	5.11	7.68	5.05	5.37	8.54	5.27	5.59	9.43	5.48	5.81
	5	4.55	3.71	4.04	5.44	4.00	4.33	6.34	4.60	4.93	7.25	4.85	5.20	8.15	5.11	5.44	9.13	5.36	5.69
	6	4.07	3.51	3.84	4.98	3.81	4.14	5.89	4.42	4.75	6.82	4.70	5.03	7.77	4.96	5.29	8.80	5.23	5.56
	7	3.57	3.31	3.57	4.45	3.60	3.93	5.35	4.21	4.54	6.34	4.51	4.84	7.35	4.80	5.12	8.35	5.06	5.38
	8	3.08	3.08	3.08	3.95	3.40	3.73	4.87	4.02	4.35	5.93	4.35	4.67	6.98	4.65	4.98	7.93	4.90	5.23
9	2.52	2.52	2.52	3.26	3.13	3.26	4.24	3.78	4.10	5.39	4.14	4.47	6.55	4.49	4.82	7.56	4.76	5.09	

8°C ENTERING TEMPERATURE

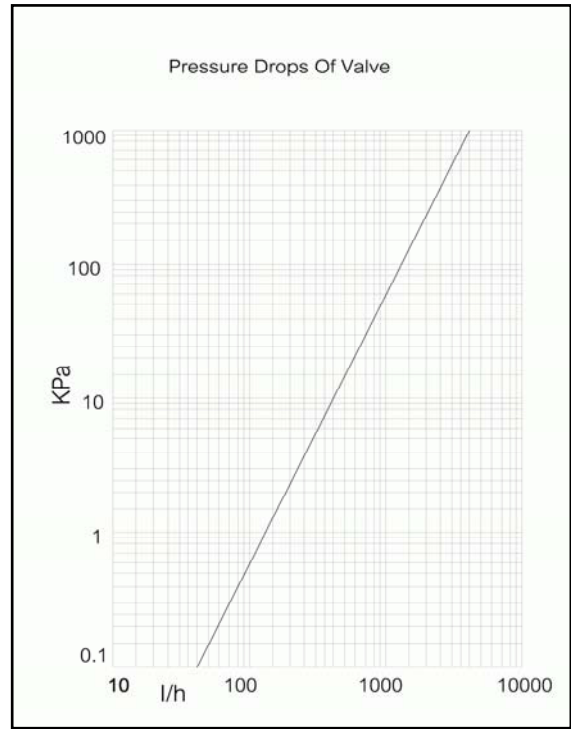
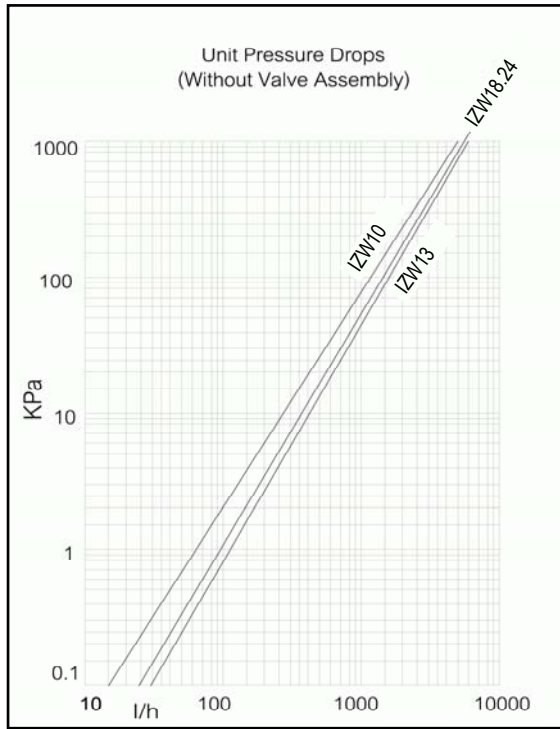
UNIT MODEL	WATER		ENTERING AIR TEMPERATURE °C																
	TEMP.	17° C WB			18° C WB			19° C WB			20° C WB			21° C WB			22° C WB		
	RISE	Total	SENSIBLE		Total	SENSIBLE		Total	SENSIBLE		Total	SENSIBLE		Total	SENSIBLE		Total	SENSIBLE	
	K.	Cap.	23 DB	24 DB	Cap.	24 DB	25 DB	Cap.	26 DB	27 DB	Cap.	27 DB	28 DB	Cap.	28 DB	29 DB	Cap.	29 DB	30 DB
IZW10MPV-CW	4	1.79	1.62	1.78	2.30	1.79	1.95	2.72	2.07	2.23	3.18	2.21	2.37	3.65	2.33	2.49	4.20	2.48	2.63
	5	1.43	1.43	1.43	1.94	1.65	1.81	2.40	1.95	2.11	2.86	2.09	2.25	3.33	2.22	2.38	3.90	2.37	2.53
	6	1.10	1.10	1.10	1.61	1.53	1.61	2.09	1.84	2.00	2.56	1.98	2.14	3.07	2.12	2.28	3.59	2.26	2.42
	7	0.76	0.76	0.76	1.26	1.26	1.26	1.75	1.71	1.75	2.25	1.86	2.02	2.75	2.00	2.16	3.32	2.16	2.32
	8	0.49	0.49	0.49	0.93	0.93	0.93	1.44	1.44	1.44	1.88	1.73	1.88	2.47	1.91	2.07	3.06	2.07	2.23
IZW13MPV-CW	4	2.54	2.17	2.37	3.12	2.37	2.57	3.69	2.75	2.95	4.24	2.91	3.11	4.84	3.07	3.28	5.51	3.26	3.46
	5	2.21	2.04	2.21	2.78	2.23	2.43	3.39	2.63	2.83	3.95	2.79	2.99	4.54	2.96	3.16	5.24	3.15	3.35
	6	1.90	1.90	1.90	2.49	2.11	2.32	3.10	2.51	2.71	3.65	2.68	2.88	4.25	2.84	3.04	4.94	3.04	3.24
	7	1.66	1.66	1.66	2.19	2.00	2.19	2.81	2.40	2.60	3.36	2.57	2.77	3.89	2.71	2.91	4.61	2.91	3.11
	8	1.47	1.47	1.47	1.95	1.95	1.95	2.50	2.28	2.48	3.09	2.46	2.66	3.63	2.62	2.82	4.35	2.82	3.02
IZW18MPV-CW	4	3.97	3.23	3.52	4.80	3.50	3.79	5.60	4.03	4.32	6.42	4.27	4.56	7.25	4.49	4.78	8.23	4.75	5.03
	5	3.51	3.04	3.33	4.37	3.33	3.62	5.25	3.89	4.18	6.08	4.13	4.42	6.92	4.35	4.64	8.00	4.66	4.94
	6	2.98	2.83	2.98	3.93	3.15	3.44	4.86	3.74	4.03	5.70	3.99	4.28	6.28	4.11	4.40	7.56	4.49	4.78
	7	2.42	2.42	2.42	3.40	2.95	3.24	4.41	3.56	3.85	5.27	3.82	4.11	6.19	4.08	4.37	7.23	4.36	4.65
	8	1.92	1.92	1.92	2.86	2.74	2.86	3.91	3.38	3.66	4.80	3.64	3.94	5.81	3.94	4.23	6.91	4.25	4.54
IZW24MPV-CW	4	5.01	3.90	4.23	5.83	4.16	4.49	6.76	4.78	5.11	7.68	5.05	5.37	8.54	5.27	5.59	9.43	5.48	5.81
	5	4.55	3.71	4.04	5.44	4.00	4.33	6.34	4.60	4.93	7.25	4.85	5.20	8.15	5.11	5.44	9.13	5.36	5.69
	6	4.07	3.51	3.84	4.98	3.81	4.14	5.89	4.42	4.75	6.82	4.70	5.03	7.77	4.96	5.29	8.80	5.23	5.56
	7	3.57	3.31	3.57	4.45	3.60	3.93	5.35	4.21	4.54	6.34	4.51	4.84	7.35	4.80	5.12	8.35	5.06	5.38
	8	3.08	3.08	3.08	3.95	3.40	3.73	4.87	4.02	4.35	5.93	4.35	4.67	6.98	4.65	4.98	7.93	4.90	5.23
9	2.52	2.52	2.52	3.26	3.13	3.26	4.24	3.78	4.10	5.39	4.14	4.47	6.55	4.49	4.82	7.56	4.76	5.09	

Performance Data - Standard Heating Mode

Heating Capacity(kw) - (Turbo Fan Speed)

UNIT MODEL	Water flow rate l/h	Temp. diff. °K = Water entering temp.-Air entering temp.						
		20	30	40	50	60	70	
IZW10MPV/H-CW	318	2.50	3.77	5.05	6.34	7.62	8.88	
	472	2.68	4.03	5.41	6.78	8.15	9.50	
	740	2.83	4.26	5.71	7.16	8.61	10.03	
	955	2.88	4.34	5.82	7.30	8.78	10.23	
	1170	2.92	4.40	5.90	7.39	8.88	10.35	
	1380	2.94	4.43	5.94	7.44	8.95	10.43	
	1590	2.96	4.46	5.98	7.50	9.01	10.50	
IZW13MPV/H-CW	425	2.93	4.42	5.92	7.43	8.93	10.41	
	646	3.11	4.68	6.28	7.87	9.47	11.03	
	990	3.23	4.87	6.53	8.19	9.84	11.47	
	1270	3.29	4.96	6.64	8.33	10.01	11.77	
	1555	3.32	5.00	6.70	8.40	10.10	11.77	
	1840	3.34	5.04	6.75	8.46	10.18	11.86	
	2120	3.37	5.07	6.80	8.52	10.25	11.94	
IZW18MPV/H-CW	318	4.17	6.29	8.43	10.57	12.71	14.81	
	530	4.75	7.15	9.59	12.02	14.45	16.84	
	740	5.01	7.55	10.12	12.69	15.26	17.79	
	1007	5.19	7.82	10.48	13.14	15.80	18.42	
	1170	5.26	7.93	10.62	13.32	16.02	18.66	
	1380	5.32	8.01	10.74	13.46	16.19	18.86	
	1590	5.37	8.08	10.83	13.58	16.33	19.03	
IZW24MPV/H-CW	425	4.86	7.32	9.80	12.29	14.78	17.23	
	710	5.38	8.10	10.86	13.61	16.37	19.07	
	1088	5.66	8.53	11.43	14.34	17.24	20.09	
	1270	5.76	8.67	11.62	14.57	17.52	20.42	
	1555	5.83	8.78	11.77	14.76	17.75	20.68	
	1840	5.88	8.86	11.88	14.89	17.91	20.87	
	2120	5.93	8.93	11.97	15.01	18.05	21.04	

Pressure Drop - Standard Conditions



UNIT MODEL	CAPACITY	FAN SPEED			
		T	H	M	L
IZW10MPVC/H-CW	TOTAL	1	0.80	0.65	0.59
	SENSIBLE	1	0.79	0.64	0.58
IZW13MPVC/H-CW	TOTAL	1	0.72	0.56	0.50
	SENSIBLE	1	0.73	0.58	0.51
IZW18MPVC/H-CW	TOTAL	1	0.90	0.81	0.69
	SENSIBLE	1	0.88	0.79	0.65
IZW24MPVC/H-CW	TOTAL	1	0.85	0.73	0.59
	SENSIBLE	1	0.84	0.71	0.57

PERFORMANCE DATA - DISTRICT COOLING



COOLING CAPACITY (KW)

5.5°C ENTERING WATER TEMPERATURE

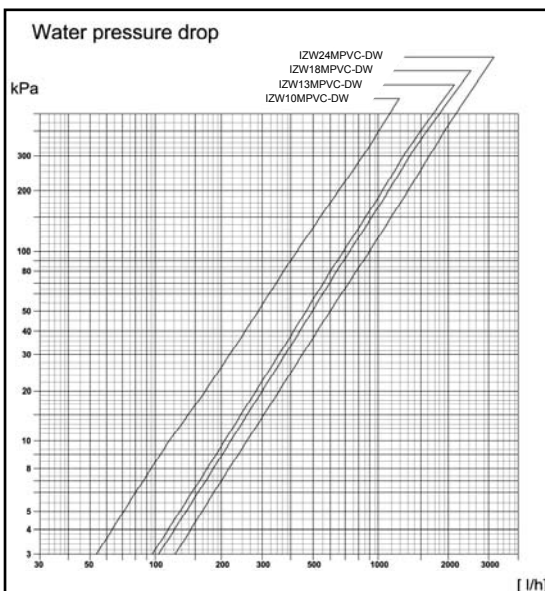
UNIT MODEL	WATER TEMP. RISE K.	ENTERING AIR TEMPERATURE °C											
		17° C WB			18° C WB			19° C WB			20° C WB		
		Total	SENSIBLE		Total	SENSIBLE		Total	SENSIBLE		Total	SENSIBLE	
	Cap.	23 DB	24 DB	Cap.	24 DB	25 DB	Cap.	26 DB	27 DB	Cap.	27 DB	28 DB	
IZW10MPVC-DW	8.0	2.48	2.01	2.14	2.97	2.26	2.40	3.44	2.63	2.77	3.90	2.84	2.99
	8.5	2.37	1.94	2.07	2.87	2.19	2.33	3.35	2.57	2.71	3.82	2.79	2.93
	9.0	1.85	1.58	1.69	2.48	1.92	2.02	3.03	2.35	2.46	3.55	2.60	2.72
IZW13MPVC-DW	8.0	3.00	2.40	2.56	3.59	2.70	2.86	4.16	3.14	3.30	4.71	3.39	3.56
	8.5	2.86	2.31	2.46	3.47	2.62	2.78	4.05	3.06	3.23	4.60	3.33	3.49
	9.0	2.15	1.83	1.97	3.09	2.35	2.51	3.70	2.82	2.98	4.28	3.11	3.27
IZW18MPVC-DW	8.0	4.29	3.51	3.74	5.14	3.93	4.17	5.95	4.57	4.82	6.74	4.95	5.20
	8.5	4.10	3.38	3.61	4.97	3.82	4.05	5.79	4.46	4.71	6.59	4.85	5.10
	9.0	3.19	2.74	2.95	4.15	3.27	3.49	5.07	3.98	4.19	5.98	4.44	4.65
IZW24MPVC-DW	8.0	5.15	4.07	4.34	6.12	4.55	4.82	7.05	5.26	5.55	7.96	5.68	5.97
	8.5	4.94	3.93	4.19	5.94	4.43	4.70	6.88	5.15	5.43	7.80	5.58	5.86
	9.0	4.17	3.40	3.51	5.32	4.01	4.26	6.33	4.78	5.04	7.29	5.24	5.51

UNIT MODEL	WATER TEMP. RISE K.	ENTERING AIR TEMPERATURE °C											
		17° C WB			18° C WB			19° C WB			20° C WB		
		Total	SENSIBLE		Total	SENSIBLE		Total	SENSIBLE		Total	SENSIBLE	
	Cap.	23 DB	24 DB	Cap.	24 DB	25 DB	Cap.	26 DB	27 DB	Cap.	27 DB	28 DB	
IZW10MPVC-DW	8.0	2.04	1.72	1.83	2.65	2.04	2.16	3.13	2.43	2.54	3.61	2.66	2.79
	8.5	1.56	1.38	1.49	2.19	1.74	1.86	2.73	2.15	2.28	3.23	2.40	2.54
	9.0	1.31	1.23	1.31	2.00	1.62	1.73	2.59	2.05	2.17	3.11	2.32	2.45
IZW13MPVC-DW	8.0	2.60	2.13	2.26	3.24	2.47	2.63	3.83	2.92	3.08	4.39	3.19	3.36
	8.5	1.79	1.61	1.74	2.65	2.07	2.22	3.29	2.56	2.71	3.92	2.88	3.03
	9.0	1.14	1.14	1.14	2.39	1.92	2.05	3.13	2.45	2.60	3.76	2.78	2.93
IZW18MPVC-DW	8.0	3.50	2.98	3.20	4.44	3.47	3.69	5.29	4.14	4.37	6.12	4.55	4.79
	8.5	2.70	2.42	2.62	3.75	3.00	3.22	4.71	3.74	3.96	5.58	4.18	4.41
	9.0	2.29	2.17	2.29	3.46	2.82	3.02	4.43	3.55	3.77	5.36	4.04	4.27
SUWX24MPVC-DW	8.0	4.52	3.65	3.91	5.54	4.18	4.44	6.51	4.92	5.19	7.44	5.36	5.64
	8.5	3.34	2.86	3.08	4.60	3.55	3.80	5.68	4.36	4.60	6.78	4.92	5.15
	9.0	2.86	2.57	2.78	4.28	3.34	3.58	5.42	4.19	4.43	6.44	4.70	4.96

6.5°C ENTERING WATER TEMPERATURE

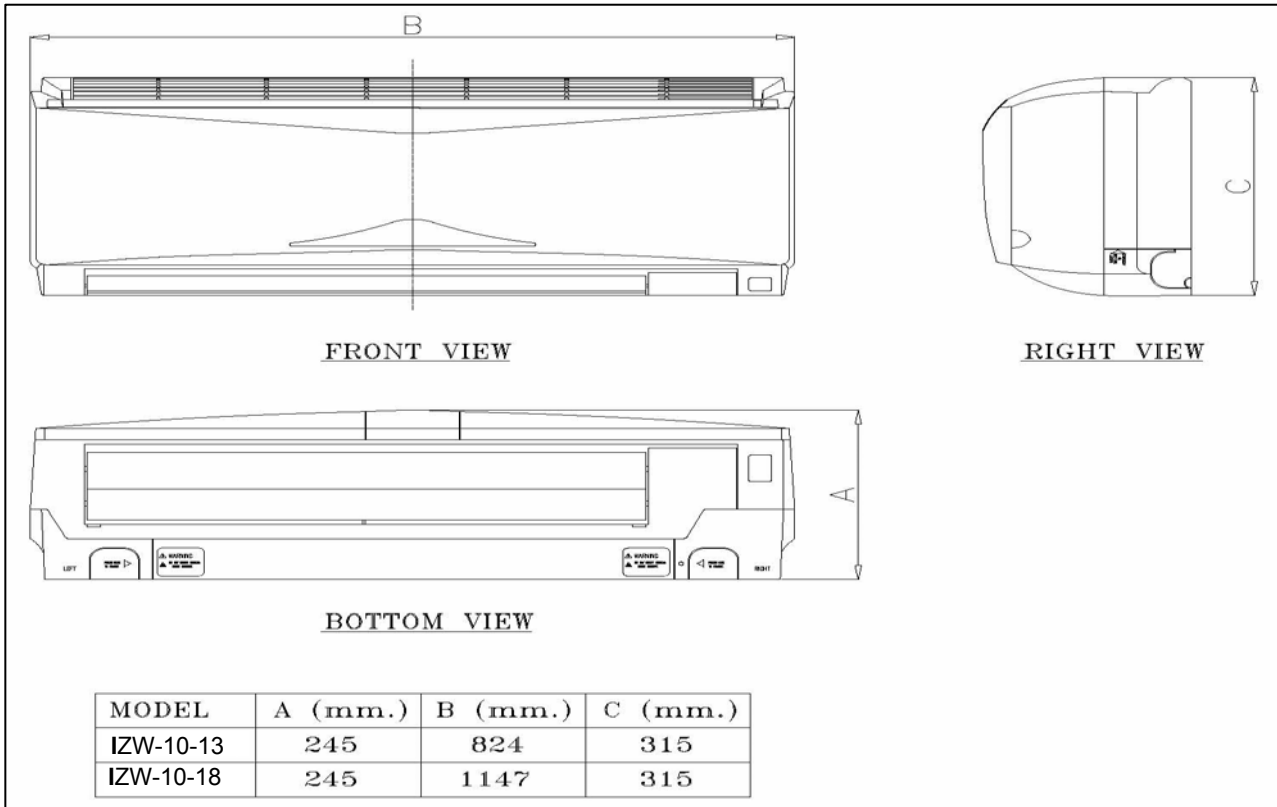
UNIT MODEL	WATER TEMP. RISE K.	ENTERING AIR TEMPERATURE °C											
		17° C WB			18° C WB			19° C WB			20° C WB		
		Total	SENSIBLE		Total	SENSIBLE		Total	SENSIBLE		Total	SENSIBLE	
	Cap.	23 DB	24 DB	Cap.	24 DB	25 DB	Cap.	26 DB	27 DB	Cap.	27 DB	28 DB	
IZW10MPVC-DW	8.0	1.63	1.44	1.56	2.22	1.76	1.89	2.75	2.17	2.30	3.24	2.42	2.56
	8.5	1.37	1.27	1.37	2.01	1.63	1.75	2.56	2.04	2.17	3.09	2.32	2.45
	9.0	-	-	-	1.80	1.49	1.60	2.38	1.92	2.05	2.89	2.19	2.32
IZW13MPVC-DW	8.0	1.92	1.70	1.84	2.69	2.11	2.26	3.33	2.60	2.75	3.92	2.90	3.06
	8.5	1.14	1.14	1.14	2.42	1.94	2.08	3.12	2.45	2.61	3.74	2.78	2.93
	9.0	-	-	-	2.12	1.76	1.89	2.87	2.30	2.44	3.53	2.64	2.79
IZW18MPVC-DW	8.0	2.82	2.52	2.72	3.80	3.06	3.28	4.75	3.78	4.00	5.60	4.21	4.45
	8.5	2.37	2.23	2.37	3.47	2.85	3.05	4.40	3.55	3.77	5.30	4.01	4.24
	9.0	-	-	-	3.10	2.61	2.81	4.10	3.36	3.57	4.99	3.82	4.04
IZW24MPVC-DW	8.0	3.47	2.97	3.20	4.68	3.62	3.87	5.71	4.41	4.66	6.68	4.88	5.15
	8.5	2.95	2.64	2.86	4.25	3.34	3.58	5.40	4.19	4.44	6.40	4.70	4.96
	9.0	-	-	-	3.83	3.08	3.31	5.00	3.93	4.18	6.10	4.50	4.76

PRESSURE DROP DISTRICT COOLING CONDITIONS



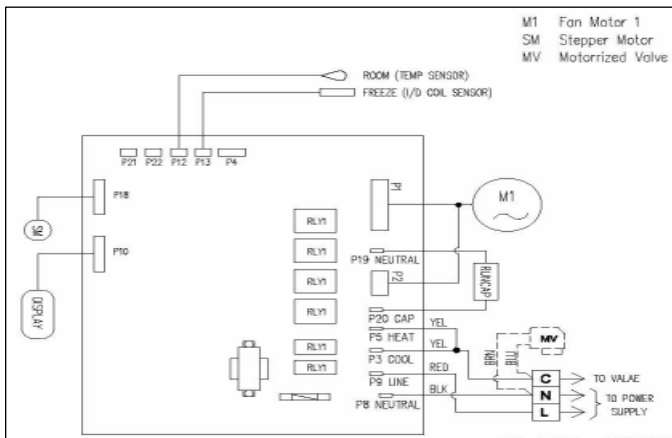
UNIT MODEL	CAPACITY	FAN SPEED			
		T	H	M	L
IZW10MPVC/H-DW	TOTAL	1	0.87	0.63	0.70
	SENSIBLE	1	0.86	0.75	0.70
IZW13MPVC/H-DW	TOTAL	1	0.81	0.71	0.65
	SENSIBLE	1	0.81	0.71	0.65
IZW18MPVC/H-DW	TOTAL	1	0.91	0.83	0.67
	SENSIBLE	1	0.90	0.81	0.65
IZW24MPVC/H-DW	TOTAL	1	0.87	0.75	0.62
	SENSIBLE	1	0.87	0.75	0.62

Unit Dimensions

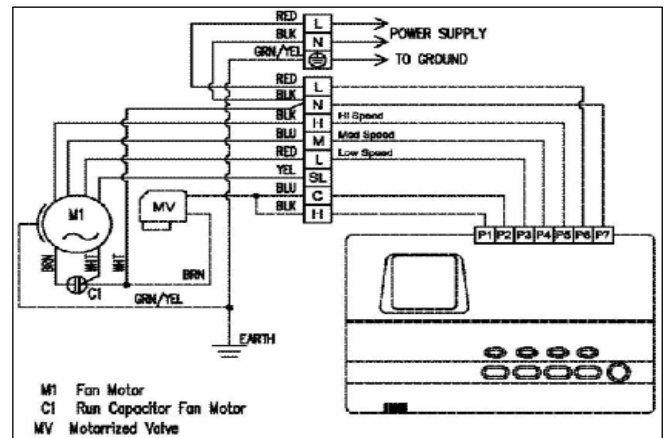


Wiring Diagram

With LCD Wireless Control



With Wired Digital Room Thermostat Control



IZUMI CORPORATION, TOKYO, JAPAN

3-12-8, Sumida-ku, kinshi, Tokyo, Japan
 Te. +81-3-5848-2500 Fx. +81-3-5848-2500
 info@izumicool.com, www.izumicool.com